

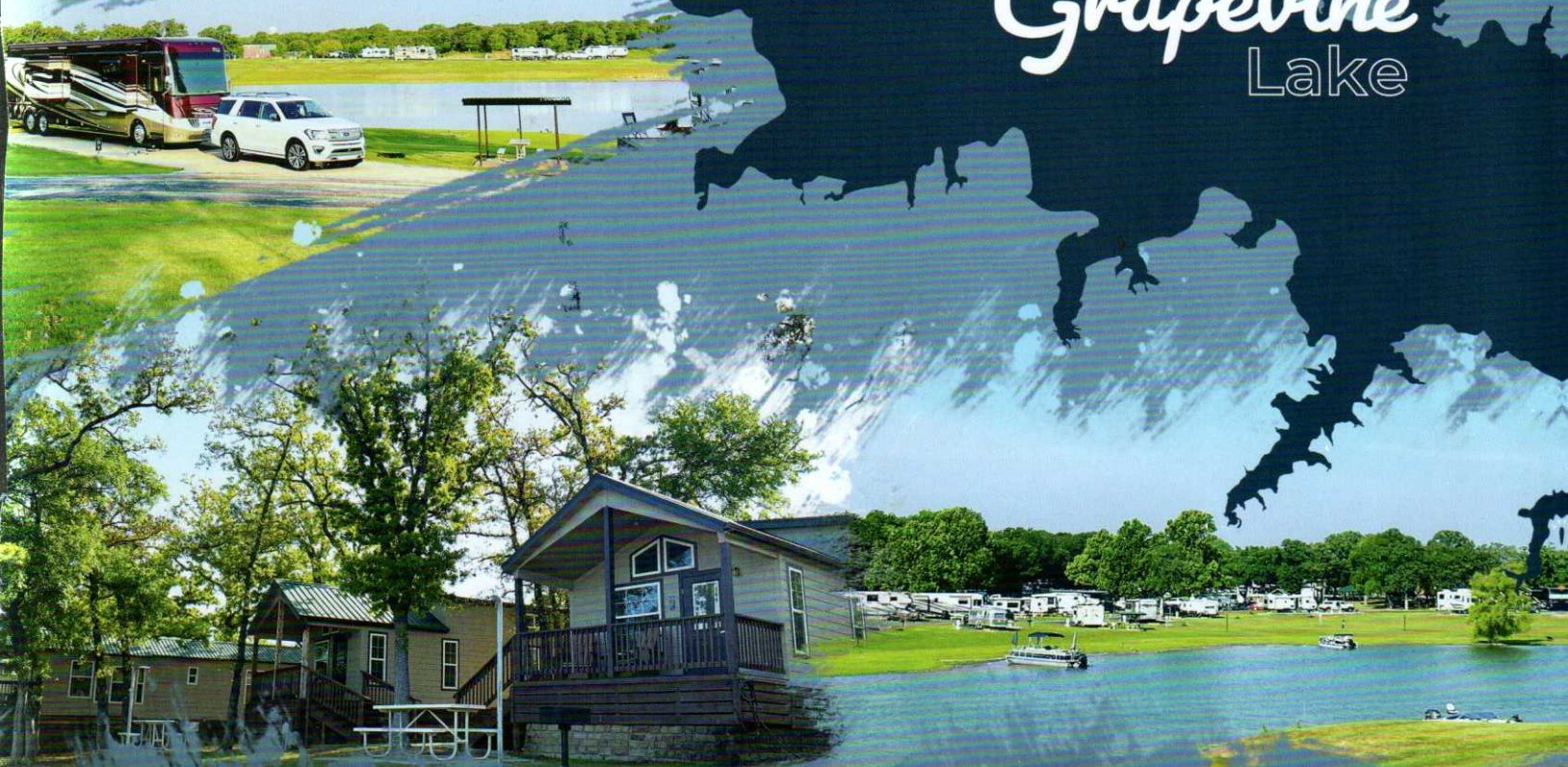
Owned and operated by The City of  
Grapevine Parks and Recreation Department

GRAPEVINE  
PARKS & REC

# The Vineyards

CAMPGROUND & CABINS ON

# Grapevine Lake



*Camp Grapevine... Experience Grapevine*

VINEYARDSCAMPGROUND.COM

1501 N. Dooley Street, Grapevine, Texas 76051

Gatehouse: 817.329.8993

Emergency After Hours: 817.521.3712

[thevineyards@grapevinetexas.gov](mailto:thevineyards@grapevinetexas.gov)



WiFi Access: VINEGUEST  
NO PASSWORD NEEDED



*Don't miss out  
on the best  
Texas Sunsets!*

**Are you a member of Good Sam?**  
Get a 10% discount at our park and  
purchase your Good Sam Membership  
with us at The Gatehouse!

## *Welcome -*

The City of Grapevine maintains and operates The Vineyards Campground & Cabins for your enjoyment. We look forward to providing your family a memorable, one of a kind camping experience.

We have assembled a lot of information in this guide for you, including a map of our campground, a list of TV channels and details about the campground to make your stay more enjoyable.

Experience Grapevine, our campgrounds, our trails, parks, and downtown with historic Main Street and all we have to offer!

Thank you for choosing The Vineyards Campground & Cabins. We look forward to a great stay and seeing you again in the future!

*- The Vineyards Staff*

## **Grapevine Trails**

Explore paved trails, natural surface trails, mountain biking trails & paddling trails in Grapevine. Scan the QR code for your guide to our trails.



## **Grapevine Lake**

Grapevine Lake is home to many lake parks, facilities, boat ramps and great fishing areas. See other rental locations and lake based activity by scanning the QR code.



## **Grapevine Parks**

Staying with us for a while? Check out many of our premiere parks with awesome play structures for those younger campers. Scan the QR code for a list of all parks.



The Vineyards  
Campground & Cabins  
ON GRAPEVINE LAKE

RECOMMENDED MERCHANT DIRECTORY

Your Park Hosts proudly recommend the following businesses for your enjoyment and convenience. **Please let them know you are staying at The Vineyards Campground & Cabins.**

**AUTO & RV INSURANCE**

RV Insurance Solutions.....8

**AUTO REPAIR**

Christian Brothers Automotive Grapevine...5

**BUSINESS SERVICES**

UPS Store.....15

**FOOD & DRINK**

Esparza's Restaurante Mexicano..... 4

Grapevine Farmer's Market .....5

Judy Pies.....5

Kountry Donuts .....5

Sauce'd Pizza & Smashburgers .....7

Shiplely Do-nuts.....15

The Milkshake Factory.....A

Weinberger's Deli .....7

Wicho's House.....5

Winestein's Tasting Room .....5

**GRAPEVINE FUN**

Grapevine Convention & Visitor's Bureau...11

Winestein's Tasting Room .....5

**MOBILE REPAIR & DETAILING**

Blue Moon RV Repair.....12

Kleen Tank .....14

Legion RV Repair.....A

Mobile Repair Specialists.....13

Nomad RV Tech.....13

Rolling Wrenches.....15

Sparkle On The Spot.....13

**OUTDOOR & CAMPING SUPPLIES**

Hall's Camp Store .....10

Northwest Propane Gas Company .....15

**RV SALES & SERVICE**

Marathon Coach, Inc .....13

**SHOPPING**

Grapevine Antiques Market.....6

Grapevine Consignment Market.....6

**VETERINARIANS**

Northwest Animal Hospital .....15

**DID YOU KNOW?**

WE HAVE A NEW VINEYARDS CAMPGROUND & CABINS APP! DOWNLOAD IT FROM THE APP STORE OR SCAN THE QR CODE BELOW! YOU WILL FIND LOADS OF INSIDER INFORMATION ABOUT GRAPEVINE AND THE CAMPGROUND.

**Find:**

- LOCAL RECOMMENDATIONS
- RV SERVICE & REPAIR
- WEATHER ALERTS
- VINEYARDS EVENTS & ACTIVITIES
- BOAT REGULATIONS
- VISITOR INFORMATION
- PARK DELIVERY INFORMATION
- ...AND MUCH MORE!





**OPEN 7 DAYS**

Esparza's is a well known and long loved tradition that is a popular part of the Grapevine experience. We are just a short walk off of Main Street.



**GRAPEVINE**

metro

**817.481.4668**

"Famous for  
Tex Mex,  
Notorious for  
Margaritas"


[esparzastexas.com](http://esparzastexas.com)

124 E. Worth Street  
Grapevine, Texas 76051



**KOUNTRY DONUTS**  
 102 S. MAIN ST, GRAPEVINE  
**817-421-1257**  
 {BAKED FRESH DAILY}

INSIDER TIP: BAKED FRESH DAILY



**PIE**

*Lady Pie*

**817-400-PIES**  
 520 S. Main Street  
 JudyPie.com


VIA TORAY READER'S CHOICE 2024

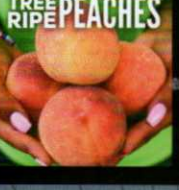

**FARMERS MARKET OF GRAPEVINE**

**OPEN 7 DAYS A WEEK!**  
 MONDAY - SATURDAY: 8AM TO 8PM  
 SUNDAY: 9AM TO 6PM

INSIDER TIP: Grapevine Tamale and Salsa Company is located inside of FMGV. Swing by for homemade tamales and made-in-house salsa!

**817-527-7446**  
 FARMERSMARKETOFGRAPEVINE.COM

**Wichos House - RESTAURANT -**

Authentic Mexican Cuisine with American Fusion

OPEN FOR BREAKFAST & LUNCH  
 TUESDAY - SATURDAY  
 8:00-3:00  
 SUNDAY  
 8:00-2:00  
 CLOSED MONDAYS

SCRATCH KITCHEN  
 2100 W NORTHWEST HWY SUITE 207 GRAPEVINE TX 76051 · (682) 271-4131

@wichohouse

SCAN FOR OUR MENU



**Christian Brothers Automotive**  
 Grapevine - Southlake  
**817-203-2753**  
 cbac.com/grapevine

2059 West State Hwy 114  
 Monday - Friday 7:00am - 6:00pm



**WINESTEIN'S**  
 TASTING ROOM

**(817) 380-5575**  
 winesteinstastingroom.com

**Exceptional Wine, Outstanding Service, Approachable Atmosphere**

280 N. Main Street  
 Grapevine, TX 76051

GRAPEVINE

# Consignment MARKET

1635 W. Northwest Hwy  
Grapevine, TX 76051  
(817) 410-2220

Tues thru Sat 10-6  
Sun 12-5, closed Monday

f [www.grapevineconsignment.com](http://www.grapevineconsignment.com)

# GRAPEVINE ANTI<sup>Q</sup>UE MARKET

1641 W Northwest Hwy.  
Grapevine, TX 76051  
(817) 329-2124

f [www.gvamarket.com](http://www.gvamarket.com)



Mon - Sat 10-6  
Sun 12-6

## Activities & Amenities

Experience the best of outdoor recreation at The Vineyards Campground. Backing up to the historical Cross Timbers forest, The Vineyards Campground opens up to one of the best fishing and recreational lakes in North Texas - Grapevine Lake. Enjoy the beautiful grounds and a wide variety of family-friendly activities to enhance your stay!



### Amenities:

- Swim Beach
- Free Wi-Fi throughout the campground
- Playground
- Group Pavilion
- Nature Trails
- Fishing Pier & Cleaning Station
- Camp Store
- Kayak Rentals (\$)
- Stand Up Paddleboard Rentals (\$)
- Golf Cart Rentals (\$)
- Activities

Download The Vineyards Campground  
App to view our Activities Calendar

# Weinberger's deli

"Weinberger's...  
NOTHING compares!"

**Award- Winning**  
\*\*\* VIENNA BEEF HALL OF FAME \*\*\*

817-670-5729  
WeinbergersDeli.com  
601 South Main Street, Suite 100  
Grapevine, Texas 76051



Follow us on  &  !!



*The JayBird*



# 20% OFF

**ANY TWO PIZZAS**  
Mon - Wed  
Dine In & To-Go Only

**sauced**  
Pizza & Smashburgers

Main St. Grapevine, TX  
817.527.6009



"How can a pizza place  
have the best smashburger  
I've ever had?! - Yelp"

  @saucedtexas

 **DOORDASH**

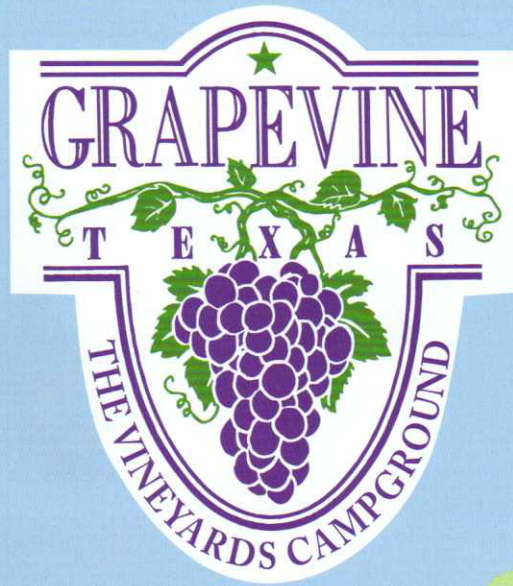
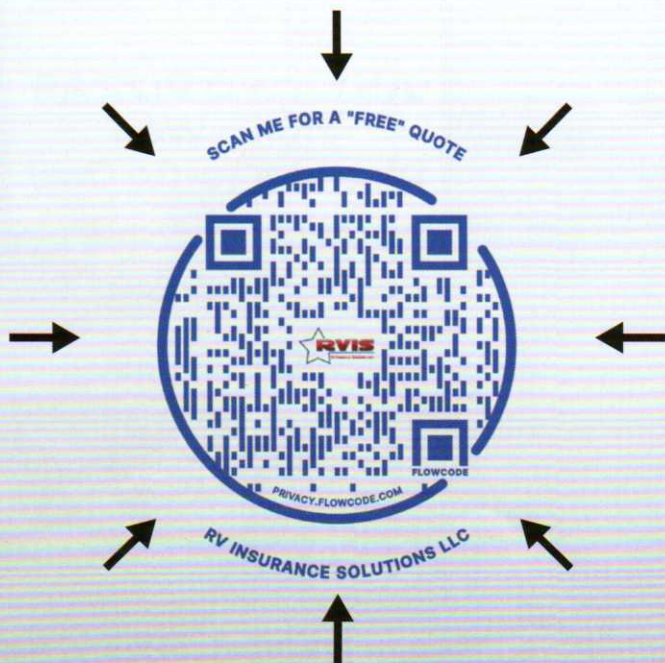
# Are you looking for a tailored RV insurance policy at great rates?

RV Insurance Solutions is the Specialty Independent Agency for you! We also offer an exceptional client-first experience with fast, friendly attention to meet the unique needs of RV owners!



Call/Email us today at  
**(214) 206-4010 &**  
[quotes@rvinsurancesolutions.com](mailto:quotes@rvinsurancesolutions.com)

Or...Scan the QR Code  
 below for a free  
 personalized quote!



In Cooperation With



US ARMY  
 CORPS OF ENGINEERS  
 Fort Worth District

# Legend

 Premium Site	 Horseshoes
 Deluxe Site	 Kayaks/SUPs
 Standard Site	 Laundry
 Pavilion Sites	 Nature Trail
 Cabin	 Parking
 Host Site	 Playground
 Basketball	 Restroom
 Boat Launch	 Shower
 Fish Cleaning Station	 Trash / Recycle
 Fishing	



MAP NOT TO SCALE



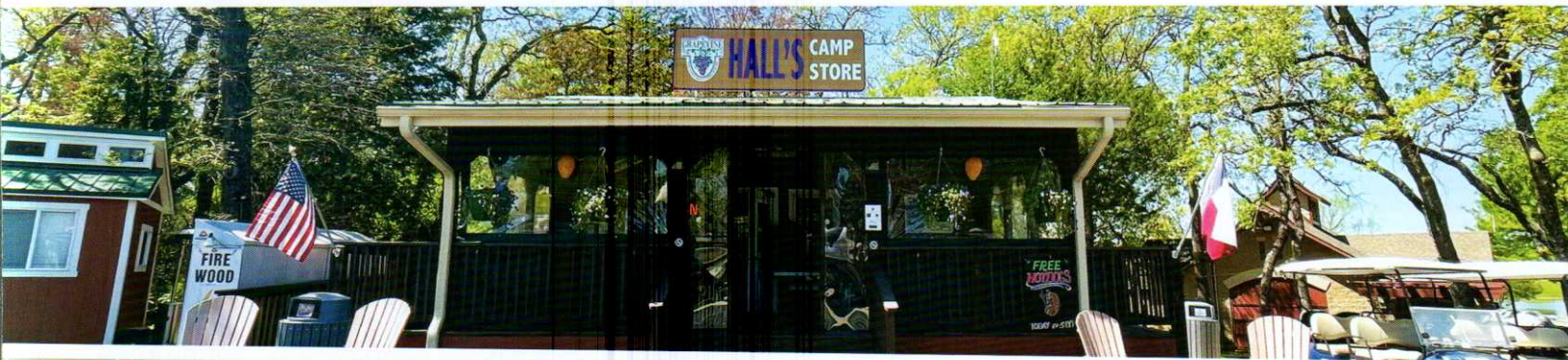
Please be cautious when re-entering the park and stop at the designated area to display car tag.  
- Thank you!



**WI-FI TIPS:**  
 1. Click on Internet symbol  
 2. Look for Vineyards Guest  
 2. No Password needed  
 4. Movie Streaming is not recommended

# Hall's Camp Store

IF YOU NEED IT,  
OUR CAMP STORE HAS IT



## Hall's Camp Store

In addition to RV supplies, groceries and camping gear, our camp store is stocked with a whole lot more to ensure your stay with us is complete.

### At the camp store, you'll find:

- Snacks & sundries
- Coffee mugs
- Grilling supplies
- Swim goggles
- Ice cream
- Pet supplies
- Fishing gear
- Ice



## Need Firewood?

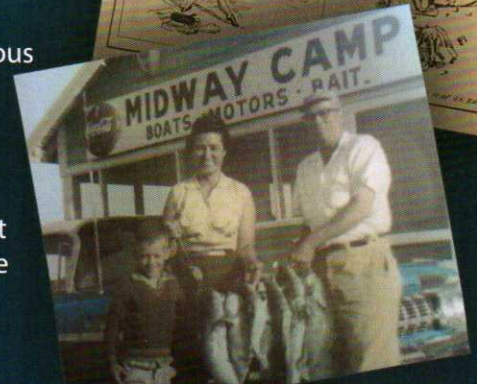
Our firewood vending machine is available 24/7

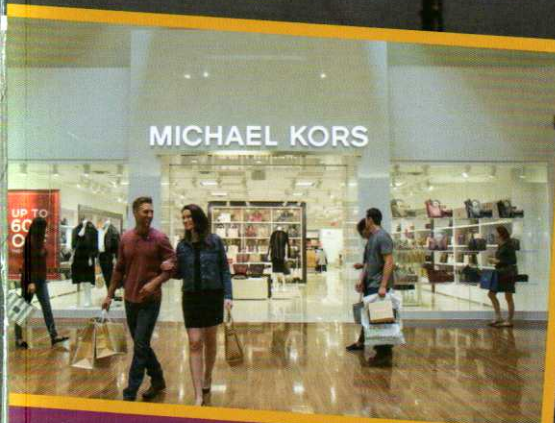


## Hall's Camp Store Namesake

Junior and his wife, Nancy, have been no stranger to businesses on Grapevine Lake. From opening and running The Catfish Hut to working for the Lake Parks system within Grapevine they helped establish the Camp Store as both a functioning shop for campers and a social hub of the campground. Guests from across the country know Junior and Nancy by name and flock to The Vineyards because of the reputation of the staff, which the Halls were instrumental in establishing. In 2020 the Grapevine Parks and Recreation Department renamed the Vineyards Camp Store to "**Hall's Camp Store.**"

Given his wealth of experiences, deep affection for Grapevine as well as his continuous efforts to enhance the community through the general store and restaurant environment. Junior became the face of the campground greeting each guest on arrival, physically leading them to their site, all while mixing-in authentic tales and local lore to the delight of each guest. In December of 2023, Junior passed away leaving a lasting legacy at the campground through the camp store and all who visit the Vineyards Campground & Cabins, including Nancy who can be found visiting the campground and camp store regularly.





## There's more to explore in Grapevine!

Enjoy award-winning restaurants and winery tasting rooms, locally-owned boutiques, luxury brands and world-class attractions, all just a few minutes away!

Visit [GrapevineTexasUSA.com](http://GrapevineTexasUSA.com)  
or call 817.410.3185 for more information.



**GRAPEVINE**  
VINTAGE ★ TEXAS

# Camping 101

## WEATHER POLICIES

### Inclement Weather

In the event of Severe Weather in the area and/or sirens are activated, please make your way to one of our campground restroom and laundry facilities for shelter.

### Wind

Please make sure all awnings are secured or in when there is a threat of high winds. Unfortunately, wings are not required to fly unless you are a bird.

### Freezing Temperatures

When temperatures drop below 32 degrees Fahrenheit, water must be turned off with regulators, filters and hoses disconnected from the hydrant and camper. If you have a heated hose and the water hydrant is covered and well insulated, disconnection is not necessary unless directed by the campground.

## WILDLIFE

### Do Not Feed The Wildlife

Please do not feed the ducks, geese or other wildlife you see throughout the campground. We are not responsible for the poor sanitation decisions of the wildlife.

## Holidays at The Vineyards

4th of July



Halloween



Thanksgiving



*We could have worked on spaceships,  
but we wanted a challenge so we  
became RV Technicians*



- Aqua-Hot • Cummins Onan • Truma • Lippert
- HWH • Carefree • Dometic • Coleman • Suburban

Honored to serve RV owners Since 1996 • Mobile and shop appointments

Dealer Certified in all on-board systems • Licensed & Insured

Phone 972-323-5050 Text for fastest response 888-823-1160

Email [service@bluemoonrv.com](mailto:service@bluemoonrv.com) • [www.bluemoonrv.com](http://www.bluemoonrv.com)

## Laundry Facilities



Our laundry facilities are equipped to take all major credit cards, or you can download the AAdvantage MONSTER pay app.

Download the AAdvantage MONSTER pay app:



Laundry Facilities are located in the east and west restrooms of the park.

Our Laundry Facilities serve as storm shelters during inclement weather.



SCAN & ANSWER

A FEW SIMPLE QUESTIONS, GET ENTERED INTO A MONTHLY DRAWING FOR A \$100 VISA GIFT CARD

**WIN \$100.00**

[www.GuestGuideSurvey.com](http://www.GuestGuideSurvey.com)

## MOBILE REPAIR SPECIALISTS

### RV Repair

# 817-297-3639

REPAIRS FOR ALL MAKES AND MODELS OF RVS!

**ALL RVS \* MOTOR HOMES  
5TH WHEELS \* TRAILERS**

- \* ON-SITE REPAIRS AND MAINTENANCE
- \* RV PRE-PURCHASE INSPECTIONS
- \* RV EXTENDED WARRANTY SERVICE



Adam Mize  
Dana Mize

[mobilerepairspecialists.com](http://mobilerepairspecialists.com)  
[mrsrv@att.net](mailto:mrsrv@att.net)

Do you like this guide?  
Wish to join our team?

**AGS** ATTENTION FULL-TIME RVERS  
SEEKING SALES REP TEAMS

- > Earn money while traveling
- > Highest commission in the industry
- > Complimentary camping
- > Sell local print & internet advertising to an established customer base
- > Supportive office provides assignments

The Leader in the Guest Services  
Guide Industry for over 35 Years

Go to the "Join Our Team" page at  
[agspub.com](http://agspub.com) or call 877-518-1989

### Guaranteed Satisfaction

- NEW Deionized Water Guaranteed (Spot Free Bright Rinse)
- Convenient On-Site Service
- Hand Waxing/Paste Waxes
- Swirl Free Scratch Removal
- High Speed Wheel Polishing
- Ceramic Coating Application
- RV Roof Treatment



**PROFESSIONAL MOBILE  
DETAIL SERVICE**

Rated #1  
Best Crew  
in the U.S.A.



[sparkleonthespot.com](http://sparkleonthespot.com)

# 817-781-2577

Please text for quicker response

# NOMAD

RV TECH SERVICES

**RV  
REPAIR  
NEEDED?**



generators • electrical  
plumbing • hydraulic systems  
refrigerators • heaters & A/C

**NOMADRVTECH.COM**

**972-342-1784**



THE WORLDS LARGEST  
LUXURY BUS CONVERTER

NEW & PRE-OWNED  
BUS CONVERSIONS

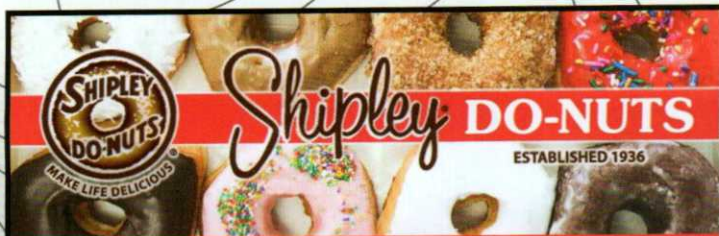


FLORIDA 800-437-8295

TEXAS 800-448-8881 OREGON 800-234-9991

[WWW.MARATHONCOACH.COM](http://WWW.MARATHONCOACH.COM)






**Shipley DO-NUTS**  
ESTABLISHED 1936  
MAKE LIFE DELICIOUS

604 Northwest Hwy, Grapevine, TX 76051

Open 7 Days a Week, 5am to 3pm  
Do-Nuts, Kolaches & Coffee



**NORTHWEST**  
Since 1946  
**PROPANE GAS CO.**

Bottled Gas • RV Service  
Gas Grills • Heaters

www.northwestpropane.com

For In Park Propane Services  
(Saturday delivery) - Call 972-247-6121

**IN PARK SERVICE PROPANE 1-800-274-6121**

VISIT OUR STORE FOR PROPANE OR REPAIR NEEDS  
CARROLLTON, 1515 W. BELT LINE RD. (972) 247-6121




**Everything you need under one roof.**

printing packing shipping mailboxing  
faxing finishing copying notarizing

**ups THE UPS STORE**

Monday - Friday 8:00 - 8:00  
Saturday 9:30 - 4:30  
Sunday 11:00 - 4:00

1527 W State Hwy 114 Ste 500  
Grapevine, TX 76051  
817.251.9337  
store4857@theupsstore.com  
theupsstore.com/4857

724 W. Main St. Ste 335A  
Lewisville, TX 75067  
store7897@theupsstore.com  
theupsstore.com/7897

**We Take Amazon Returns!**




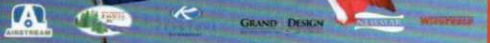
**ROLLING WRENCHES MOBILE RV REPAIR**

Our mission at rolling Wrenches RV Mobile Repair is to provide exceptional on-th-go repair and maintenance services that keep RV enthusiasts rolling with confidence.

Labor & Diagnostics  
Weekday Rates: \$140 & \$160  
Weekend Rates \$200 & \$180  
Holiday & Afterhours \$250 & \$200

**WE WORK ON ALL RV'S**

PROUDLY LOCATED IN FLOWER MOUND, TEXAS

**RV TANK CARE**  
"KEEPING YOU FRESH" FOR ALL YOUR FRESH WATER & HOLDING TANK NEEDS!

**JASON MCDONALD**  
OWNER/TECHNICIAN  
909-801-0303  
rollingwrenchesmobilervrepair.net  
M-F 7am to 7pm Sat & Sun 9am-5pm



With a team of expert veterinarians, we are ready to provide the best care for your beloved pet.




**Northwest ANIMAL HOSPITAL**  
817-488-7533  
1027 William D. Tate Ave. Grapevine

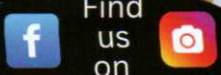
info@nwahvetgrapevine.com nwahvetgrapevine.com



**BOARDING, GROOMING, DENTISTRY, DIAGNOSTICS, SURGERY, SENIOR CARE, BEHAVIOR, PHARMACY**



Find us on

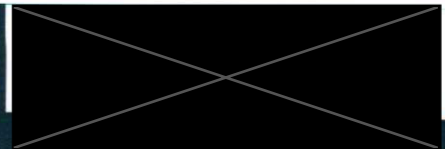




## Food Deliveries | Rideshare

Guests must meet service & food delivery drivers at the designated parking spot at the Gatehouse.

Site/Cabin # **94**



## RV Sites

Check-in: 2:00 pm | Check-out: 12:00 pm



## Cabins

Check-in: 3:00 pm | Check-out: 11:30 am



Scan to view  
all policies



# Policies for Happy Camping

**Quiet Time:** Quiet hours are from 10 pm to 7:30 am. Please keep noise to a minimum.

**Car Tags:** All campers must stop and display their car tag when re-entering the campground.

**Visitors:** All visitors must check-in at the gatehouse, visitors are subject to a \$5 fee. The campground is closed to visitors at 10 pm.

**Parking:** All vehicles must be parked in designated spaces. Parking on grass or on road shoulders is prohibited. Limit two vehicles per site. All others must park in overflow parking areas.

**Tents:** One tent or canopy (12x12 max) is permitted per campsite accompanying an approved camping unit. Tent camping exclusively is not permitted.

**Pets:** Pets are not permitted within cabins or buildings. All pets must be kept on a visible leash. Pets may be off leash at Puppy Point only. Please remember to clean up after your pet. Pet pens are allowed (10X10 max).

**Late Fee:** A \$50/hour late fee will be charged for guests that have not vacated their site or cabin by the designated check out time. Any guest still occupying their site beyond 2:00 pm will be charged an additional night.

**Speed Limit:** Slow to under 10 mph for safety. Beware of children at play.

**Smoking:** Smoking not allowed in any building, including cabins.

**Fires:** Fires are permitted in designated fire rings, fireplace grills or charcoal burners.

**Sites:** All guests equipment & litter must be removed from the site by time of departure. Fees may be assessed if site is left littered, damaged or in disorder. Guests are held responsible for any/all damages caused at a site or cabin.

**Children:** Children must be supervised on all docks and playground. Children under twelve (12) are not to be left unattended in any cabin, tent, building or campsite at any time and must be accompanied by an adult age eighteen (18) or older.

**Car/Camper/Boat/Golf Cart:** All motorized vehicles, including but not limited to motorcycles and golf carts, must conform to state & local law. Personal golf carts & boats must be registered and fee paid upon check in. No one under 16 is permitted to drive a cart on campground roads. This applies to both rental and personal vehicles.

**Washing Vehicles:** Washing of any vehicle or unit may only be done by professional service or by methods that do not require constant running water.



Please use caution when driving, parking, disconnecting and loading in and out of your RV.

